



## 54 kW, 915 MHz MICROWAVE GENERATOR

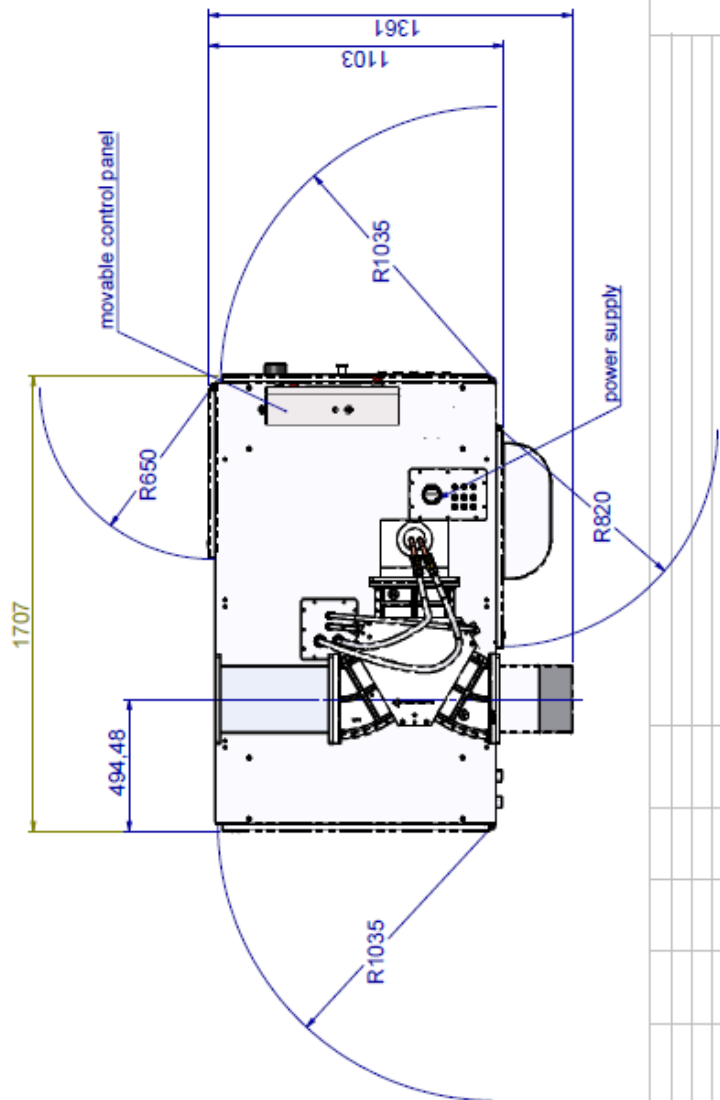
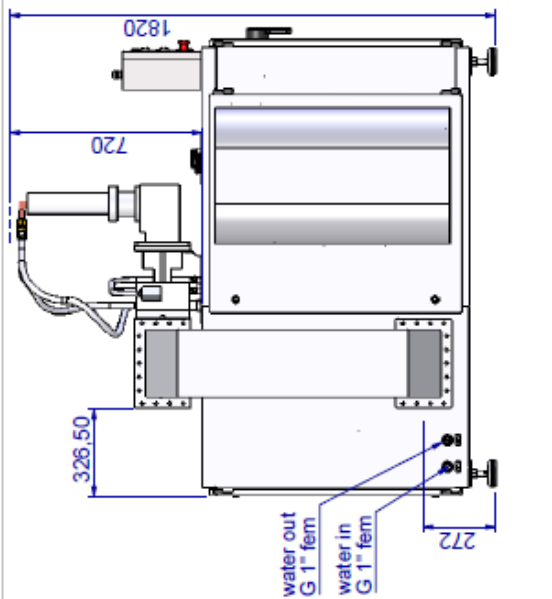
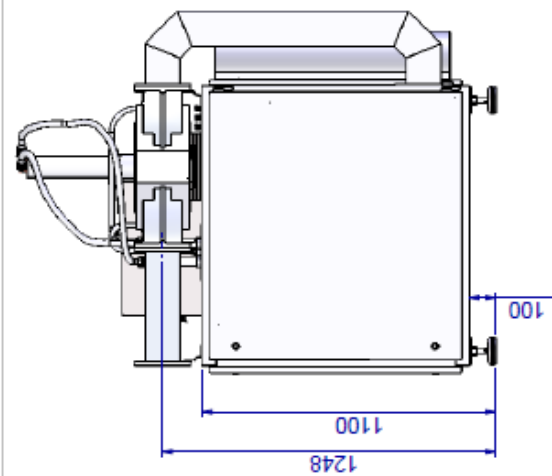
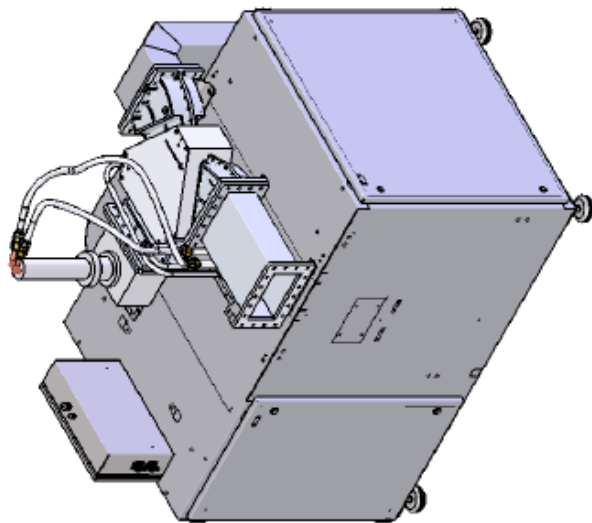
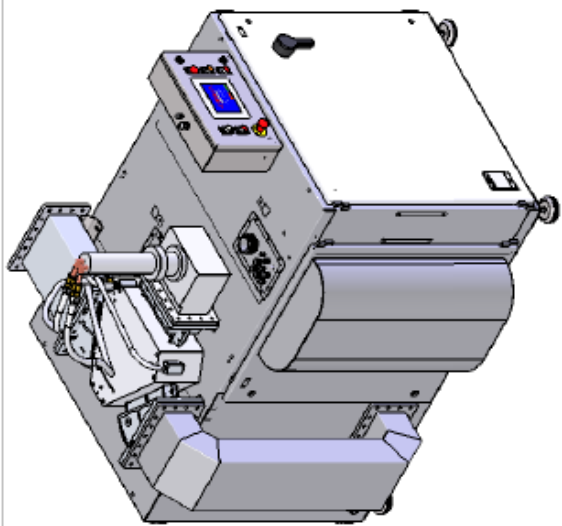
### Ref: GLP540KSM56T400FST3IR

The GLP540KSM56T400FST3IR is a continuous wave microwave generator consisting of one cabinet within which the switch mode HV power supplies and the magnetron are installed. A PLC drives simultaneously the magnetron anodic power, electromagnet current and filament voltage. The result is a very low power setting possibility (3 kW), maximum efficiency, reduced ripple and increased magnetron life time.

SAIREM's built-in Automatic Restart Function (ARF) avoids the total shutdown of the generator during a process if accidentally the magnetron switches off.



<b>REF</b>	GLP540KSM56T400FST3IR
<b>Presentation</b>	Stainless steel cabinet includes 3 off x switch mode HV power supplies ( $\eta > 93\%$ ) and isolator mounted externally. Electromagnet's supply consists of a switch mode system with current regulation. Filament supply enables soft start, voltage regulation and anti-modding function.
<b>Frequency</b>	915 MHz $\pm$ 10 MHz or 896 MHz $\pm$ 10 MHz (to be specified); central frequency is imposed by the magnetron
<b>Output power</b>	Adjustable from 3 to 50 kW
<b>Power stability, ripple</b>	Better than 1 % between 3 kW and 54 kW, ripple $\pm$ 2 % at full output power
<b>Rise &amp; fall times</b>	10 ms in standard KSM version
<b>HMI Display</b>	Colour touch screen control, all controls & functions accessible, PRO-FACE PLC, fault history...
<b>Operating mode</b>	Continuous wave (CW), plasma starting, ramp, timer, ARF system
<b>Maximum SWR</b>	integrated isolator, 25 kW RP (reflected power) any phase by forward power limitation or stop by fault (to be chosen from menu)
<b>Remote control</b>	Ethernet, Canopen or Modbus – <b>to be chosen on ordering</b>
<b>Safety interlock</b>	Safety relay, emergency stop...
<b>Mains</b>	380/415 V, 50 Hz or 60 Hz, 3 phase + earth
<b>Consumption</b>	~60 kVA at full power
<b>Microwave output</b>	WR975, flange CPR 975
<b>Weight</b>	~ 450 kg + isolator 140 kg
<b>Water cooling (min. 4 bar)</b>	Head & isolator 50 L/min (for max. 20 kW + 25 kW RP dissipated heat) Power supply 12 L/min (to dissipate 6 kW) Air/water exchanger inside the power head, water temperature control & monitoring.



		<b>saiREM</b>		12, Porte du GRAND LYON 01702 NEYRON CEDEX - FRANCE M. 04 72 01 81 60 - F. 04 72 01 81 79 www.saiREM.com	
INDEX	A	DATE	04/04/16	ML	DESSINE
					VERRE APPRUEVE
					EMISSION ORIGINALE
					MODIFICATION DU DESSIN
REF		MICROWAVE GENERATOR		915 MHz / 50 kW	
FORMAT		A3		ECHELLE : 1;18	
DESSIN		3415-ENS A		WEIGHT: 700,69	